

Currents

THE SKAGIT VALLEY COLLEGE PREMIER MAGAZINE • FALL 2019



Dr. Roxi Smith
STEM, Access, & Community

**FOUNDATION 2018-2019
ANNUAL REPORT**

Focused on Equity: Access • Achievement • Community

FOCUSED ON EQUITY

Access • Achievement • Community



I am proud that our Strategic Plan Core Themes of Equity in Access, Achievement, and Community are at the heart of our work at Skagit Valley College. These themes help the College identify new educational programs and opportunities, and to view them through a lens of equity. With this focus, we minimize barriers and maximize opportunities for diverse student populations, create a diverse learning environment where everyone belongs, and provide support so that students complete their educational goals.

Among our new equity focused initiatives, we launched a Cardinal STEM Scholars Program in Fall 2019. The program focuses on student success by awarding scholarships to STEM students who have financial barriers and providing them with multiple levels of faculty and peer support and engagement. Our first cohort of students are pursuing a variety of inspiring degree goals including Biochemistry, Engineering, Biology, and Computer Science. The Cardinal STEM Scholars Program was made possible by a \$648,000 grant from the National Science Foundation in support of STEM students majoring in Science, Technology, Engineering, and Math.

Also, in this special edition of Currents, the College is proud to showcase the great work of our SVC Foundation in their Annual Report to you. Many of our students reach their educational goals because of the leadership, support, and the generosity you extend through the SVC Foundation. Your gifts — whether they create scholarships, provide instructional enhancements, or support technology — make a big difference in our students' lives.

On behalf of the SVC Board of Trustees, SVC Foundation Board of Governors, faculty, staff, and students, thank you for joining our commitment to expanding access to higher education to all who seek a better future. With your ongoing support, students are achieving their educational goals.

Sincerely,

Dr. Thomas A. Keegan
President

SVC BOARD OF TRUSTEES



Christon Skinner
Chair



Kathryn Bennett
Vice Chair



Lindsay Fiker



Flora Perez-Lucatero



Megan Scott O'Bryan

TABLE OF CONTENTS

3	Students on STEM Pathway	6	In Memoriam
4	Roxi Smith: Laventure STEM Program	7	William E. Mowrer Scholarship
5	Foundation Annual Report 2018-2019	8-11	Endowments & Donors Lists
		12	SVC Student Demographics

- Currents is published by SVC College Advancement
- **Editors/Writers:**
- Arden Ainley, Anne Clark, Pam Davis, Kelly Reep, Brad Tuininga, & Griffin Uchida
- **Design/Production:**
- James Walters & Don Cairns
- **Photos:** Marcus Badgley

Equity in Achievement

Innovations at SVC put Students on the STEM Pathway

Many of today's trending careers are within the fields of Science, Technology, Engineering, and Math (STEM). In Washington State, jobs in Computer Science and Engineering are especially high. In response to these needs, Skagit Valley College is proud to announce two new innovative programs that will expand equity in access and achievement for students and help them take an important next step on their pathway toward a STEM career.

Thanks to a \$648,000 grant from the National Science Foundation, SVC's new Cardinal STEM Scholars Program will award up to \$5,700 per year to qualified students with financial need and who wish to pursue a STEM pathway. Improving student access and success in STEM pathways, including first generation and underrepresented students, is one focus of the Cardinal STEM Scholars Program.

The College welcomed its first cohort of 11 Cardinal STEM Scholars to campus Fall 2019. In addition to covering the cost of attending SVC, the students will participate in a STEM Fellowship experience that will include faculty mentoring, peer support, and STEM experiences in support of their success.

Over the next five years, SVC's program expects to serve up to 68 students. Applications for the 2020-2021 program will be available next spring.

Within the engineering field, skilled professionals are in high demand in several industries—chemical, industrial, mechanical, and civil, among many others. Along with mathematicians, they solve some of the most challenging problems in the world.



For students who would like to take on these challenges, SVC now offers a Pre-Engineering Transfer Degree with three distinct pathways from which students can choose. Students can prepare for 1) Civil, Mechanical, Aeronautical, Industrial, and/or Materials Science Engineering; 2) Biological or Chemical Engineering; or 3) Computer or Electrical Engineering.

Many institutions in Washington recommend that students begin their engineering program in the first two years of college. SVC's new transfer degree is designed to meet that need locally. It will allow students the opportunity to transfer with the same preparation for their final years of college as students who began at a four-year institution.

Learn more at www.skagit.edu/engineering

Funding source: National Science Foundation | Grant info: S-STEM grant proposal #1833851



SVC's first cohort of Cardinal STEM scholars

Equity in Access

Dr. Roxi Smith: LaVenture STEM Program

September ushers in the start of the school year, and for Dr. Roxi Smith, this will be her 14th year teaching Chemistry at Skagit Valley College. But her biggest impact may be the one she's having on the Mount Vernon High School class of 2023. Starting in 2010, with a 1st grade classroom at Lincoln Elementary, Dr. Smith has worked with a cohort of students every year through elementary, middle, and starting this year, high school.

Deciding a long-term approach to community outreach would have a bigger impact, she's spent hours with these students through their educational journey. "I didn't have a good science education experience in the K-12 system," Roxi states. This helps students in a way that she didn't get until she was in college.

During the past three years, Roxi has incorporated the help of over 40 SVC student volunteers to lead in-class lab experiments with this cohort during their middle school years. Most of her students are eligible and she tries to get as diverse a population of volunteers as possible. The goal is to allow the children to relate to at least one SVC student, to see that SVC are full of people just like them, and hopefully encourage them to pursue a career in STEM (Science, Technology, Engineering and Math). "Representation is so important," Smith says. It wasn't until college when she saw a STEM teacher that she could physically identify with. "Representation is profound."

The *American Chemistry Society (ACS)* coordinates many community outreach efforts and provides people like Dr. Smith with small funding for their efforts. However, local support has increased to expand what Roxi has been able to do. This past year, the Skagit Valley College Foundation donated \$1,000 to fund last October's Middle School experiments. Shell Puget Sound Refinery has joined the effort this year with a \$1,000 contribution and is interested in providing volunteers for the classrooms. Roxi says that this new partnership wouldn't exist without her relationship with the Foundation and the Foundation's relationship with Shell.

"Where I grew up and the community I grew up in, to have an education and a degree was a life changer. The opportunity to be in this position and to serve my community through this role, it's the most important part of my job...it makes me feel like I'm returning what was given to me."



Annual Report 2018-2019

SVC Foundation is grateful to our community of generous donors and supporters. Because of people like YOU, we continue to experience unprecedented growth, increasing your impact in student's lives! Our tradition of supporting student scholarships is stronger than ever, and our support for student emergency funding and childcare vouchers, as well as direct support to College programs and labs, are all key elements of our work.

Additionally, we are excited to announce that we reached our initial goal of raising \$2.9 million for an Early Learning & Childcare Center on the Mount Vernon Campus! As we move forward with designing a new building, our committee has set a new goal to raise an additional \$275,000 by mid-February 2020 to optimize the space, add equipment, and possibly increase the building size.

Together we are changing lives and making our community stronger. *Thank you!*



Brad Tuininga
Executive Director,
SVC Foundation



Kathy Doll
President,
SVC Foundation
Board of Governors

STATEMENT OF FINANCIAL POSITION JUNE 30, 2019

ASSETS

Cash and cash equivalents	\$914,737
Pledges receivable	\$167,421
Advances due from Skagit Valley College	\$51,547
Investments	\$14,605,817
Property and equipment, net	\$1,637,519
Other assets	\$40,072
Total assets:	\$17,417,113

LIABILITIES

Accounts payable and accrued liabilities	\$18,048
Advances due to Skagit Valley College	\$348,328
Life income annuities payable	\$55,500
Tenant security deposits and prepaid rent	\$28,657
Long-term debt, net	\$962,092
Total liabilities:	\$1,412,625

NET ASSETS

Unrestricted	
Board designated - endowment	\$1,827,572
Board designated - Campus View Village	\$994,330
Board designated - Booster Club	\$90,148
Undesignated	\$160,062
Total Unrestricted	\$3,072,112
Temporarily Restricted	\$2,951,722
Permanently Restricted	\$9,980,654
Total Net Assets	\$16,004,488
Total Liabilities & Net Assets	\$17,417,113

Over
\$1M
in cash, pledges & in-kind gifts



Over
\$500k
to support vital College programs
and campaign
funds to students
(scholarships excluded)



Over
\$450k
in scholarships awarded
to over 250 students



SKAGIT VALLEY COLLEGE FOUNDATION BOARD OF GOVERNORS

Kathy Doll, President
Retired

Pam Allen, Vice President
Co-owner, Allen Construction

Rob Woods, Secretary
Chief Financial Officer,
SaviBank

Heather Hernandez, Treasurer
President & Publisher,
Skagit Publishing

Susan Cooper
REALTOR®, NextHome
Preview Properties

Danielle Martin
Advertising Sales Manager,
Skagit Publishing and
Rodan + Fields

Shelley Roberts
Executive Assistant,
Swinomish Indian Tribal
Community

Vhari Rust-Clark
Licensed Dental Hygienist
and Independent Stylist,
Stella & Dot

Isaac Williams
Financial Advisor,
Edward Jones

Tony Wisdom
Owner/CEO, Skagit Valley
Farm, LLC

In Memoriam...

Gifts made July 1, 2018 - June 30, 2019

Sam Agnew

Mark Arno Casey

Solveig Atterberry

Erling F. Bangston

Lance Baumgartel

Pat Bezas

Betty Black

Dr. Ian Black

Wesley James Blackburn

Sally Breivik

Dan Carter

Jerry and Kathy Clark

Katherine V. Cowles

Edward Dolan

Mark Drummond

Cheri Duarte

Rodney Ellis

Elaine Englert Adams

Don Erickson

Ralph Gilfilen

Vernon Hanson

Carol Hatch

Lynne Hower

Meredith Hueter

Joyce Huiseman

Barrie Hull

Elna Iverson

Marilyn Johnson

Jack Kenney

Betty Kuljis

Bojan Kuure

Barbara Lee

Hawa Bibi Loonat

Shayla K. Martin

Steve Meissner

Corey Mendoza

Abby Miller Busche

Robert Minor

Claire Mortenson

Gene Murray

Cheryl Palmer

Vonda Lynne Polinkus

EnSue Pung Puaa

Myrna E. Rae

John Ruhlman

Captain Roy Seth

Lori Stemhagen Culver

Matthew Stevens

C. Gordon Strom

Dr. Ernest Tutt

Gary Wallin

Gerry Williamson

John Willis

Julie Zorn

In Honor of...

Iris Carias

Christina and Phil Carter

Rotarian Sandra Crank-Mulkey

Dick Johnson

Commander William Overby

Eleanor Sims

Carl Young

Scholarship Benefits. Amount to be advanced to be determined by the Trustees, the First National Bank of Burlington, Oregon, in the sum of \$500.00 per year, for a four-year course in consecutive years, unless interrupted in some other unavoidable reason.)

Selection of Students. Shall be left exclusively with said Trustees, the County Superintendent of Schools of Skagit County, and the Board of Education, by such method and rules as they may adopt.

Equity in Community

Skagit Valley College's Oldest Scholarship **William E. Mowrer Scholarship**

Life on the Missouri farm was not easy for William Mowrer and his family during the early 1870s. Summers were blistering hot, winters were seemingly endless, and farm chores were never ending. Life took a devastating turn when William was just nine years old. His mother passed away after an extended illness. His father was left with an agonizing decision of going it alone and sent William and his siblings to live with relatives and neighbors. Sadly, William never lived with his father again.

Despite facing life without his parents, William Mowrer trudged on and embarked on his career pathway. A bright student who loved education, he was educated as a bank clerk and worked in Kansas in that capacity. His interesting career path also took him to the U.S. War and Treasury Departments, and to the U.S. Weather Bureau. In addition, he attended night school for the study of public oratory and expression.

In 1910, William Mowrer bought land just north of Burlington, Washington where he began farming goldenseal, an herb is often used as a dietary supplement. At the time of his death, William Mowrer was the largest and most successful goldenseal grower in America.

Throughout his life, William Mowrer maintained a deep sense of concern for orphans, like himself, and students without family support. In 1927, he established the first scholarship offered at Mount Vernon Junior College (Skagit Valley College): The William E. Mowrer Scholarship. That first year, the scholarship award was \$500, which covered the annual cost of tuition, books, and fees at that time. Today, this significant scholarship award is approximately \$10,000. It is awarded to Skagit County accredited high school students who are self-supporting and plan to attend SVC full-time in pursuit of a traditional baccalaureate degree.

The William E. Mowrer Scholarship is a beautiful reflection of Skagit Valley College's commitment to equity in community and we are grateful for William Mowrer's foresight and generosity.

To apply for SVC Foundation Scholarships for 2020-21, visit skagitfoundation.org/scholarships

Meet Taylor Wilson

William E. Mowrer Scholarship Recipient



After my mom passed away, my family was not in a position to support my attending college. Without the William E. Mowrer Scholarship, I probably wouldn't have been able to enroll right away after graduating from Sedro-Woolley High School.

I'm also grateful to my high school advisor who encouraged me to apply for this scholarship, knowing how important it would be for me. It's made such a big difference in my life. By covering the cost of tuition, books, fees, and on-campus housing, I was literally just steps away from my classes and professors. Living on campus also gave me the opportunity to get out and meet new people and make new friends.

For me, the best part of SVC has been the support system that's in place. I was part of the TRiO program and it was so amazing to have caring faculty and staff support me and teach me how to handle the college work load.

I'm proud that I graduated from SVC with an Associate in Arts General Transfer Degree and I am interested in continuing my education in the field of radiology.

Endowments

Achievement Scholarship
 Allenbach Exceptional Faculty Award
 Guy Anderson and Deryl Walls Art Scholarship
 Solveig Atterberry Memorial Scholarship
 Auction Scholarship
 Theresa Babcock Memorial Scholarship
 Brian A. Benike Scholarship
 James P. and Mabel Bishop Scholarship
 Dr. Ian Black Scholarship
 Martin Brown Biology Scholarship
 Charles "Chuck" Carroll Memorial Scholarship
 Carter Friends and Family Scholarship
 Cascade Mall Scholarship
 Mark Arno Casey Memorial Scholarship
 Champions of Diversity Scholarship
 Jerry and Kathy Clark Memorial Scholarship
 Sidney H. Clarke Memorial Scholarship
 Sharon Cole-Waldschmidt Scholarship
 Kevin Collins Memorial Scholarship
 Ruth and Wallace Crawford Scholarship
 Harold and Nelle Creel Scholarship
 Ralph R. Crum Memorial Scholarship
 Max and Pauline Dale Scholarship
 Everett & Elmyra Dalton Scholarship
 Jack and Micki Deierlein Scholarship
 Mark Drummond Memorial Scholarship
 Robert Dursch Science Equipment Fund
 Robert and Ann Dursch Sciences Scholarship

Exceptional Faculty Award
 Ferguson Foundation Scholarship
 Don Finsen Culinary Arts Scholarship
 Don Finsen Culinary Arts Removing Barriers Endowment
 First Responder Scholarship
 Robert E. Fitzgerald Memorial Scholarship
 Jim and Fran Ford Scholarship
 Wallie and Mary Ann Funk Scholarship
 Global Initiatives Endowment
 Leo Guggemos Scholarship
 Jesus Guillén Scholarship
 Leah G. Hawkinson Nursing Scholarship
 Hayes Family Scholarship
 Yoko Hisaki Memorial Scholarship
 Dr. George Hodson Scholarship
 John Hollenbeck Memorial Scholarship
 Thomas and Martina Horn Scholarship
 Human Services Scholarship
 Sara Kaplan Environmental Conservation Scholarship
 Cindy King Memorial Scholarship
 Bojan M. Kuure Nursing Scholarship
 Miriam, Muriel and Lloyd Ivey Scholarship
 Wilbur/Ivey Scholarship
 Dr. Maynard and Selma Johnson Medical Fund
 Alice and Harold Kenney Memorial Scholarship
 J. George King Scholarship
 Harold and Annabelle Kloke Scholarship
 Brandon Koetje Memorial Scholarship
 Helen Larm Agriculture Scholarship
 Debra and Bruce Lisser Scholarship
 Mac and Linda MacGregor Scholarship
 Marine Technology Scholarship

Joan Nourse Martin Early Childhood Education Scholarship
 William and Kathleen Massey Scholarship
 Mollie McBey, Elsie Duncan and Donald McBey Scholarship
 B. Hamilton McDearmid Scholarship
 McIntyre Hall Endowment
 Sydney S. McIntyre, Jr. Memorial Scholarship
 Memorial Scholarship
 John and Susan Meyer Legal Scholarship
 William E. Mowrer Scholarship
 Dave Mumford Theatre Technician Scholarship
 Nagatani Family Scholarship
 Alice and Monty Niles Memorial Scholarship
 Denise Noble and Beverly Erickson Scholarship
 Norwood Cole Library Fund
 Richard and Jean Nowadnick Life Science Scholarship
 Don Nulle Accounting Scholarship
 Carlos Ordóñez Memorial Scholarship
 Osborne Scholarship
 A.J. Osterman Memorial Scholarship
 Melvin and Oscar Peterson/Henry Tenneson Scholarship
 Commander William Overby Scholarship
 Pickering Matching Fund
 Pickering Scholarship
 Vonda Lynne Polinkus Memorial Scholarship
 Elden Pollock Scholarship
 Dave Quall Champions Scholarship
 Anne Richards Scholarship
 Ruth Elfstrom Riggles Scholarship
 Harry & Myra Roller Memorial Nursing Scholarship
 Sidney and Fosma Rood Scholarship
 Benjamin M. Root Memorial Scholarship
 Doug Rowell Memorial Scholarship

Rucilla's Scholarship
 Lina A. Jacobson Ryan Nursing Endowment
 San Juan Center Scholarship
 Wade & Fran Schroeder Scholarship
 Alberta Schulz Scholarship
 Irene Schumaker Sciences Scholarship
 Irene Schumaker Vocational Scholarship
 Second Chance Scholarship
 Shell Fallen Workers Memorial Scholarship
 Settlemyer Family Scholarship
 Matthew Charles Stevens Memorial Scholarship
 Clarence & Eileen Summers Scholarship
 John Terrey Scholarship
 Texaco Environmental Sciences Endowment
 Ken Thiessen Memorial Scholarship
 Gary and Tamera Tollefson Scholarship
 Dr. Ernest Tutt Memorial Scholarship
 John Underwood Scholarship
 George W. Wallace Accounting Scholarship
 William D. Werner Memorial Scholarship
 William D. Werner Opportunity for Excellence Endowment
 Whidbey Island Bank Golf/SVC Golf Classic Scholarship
 C. Harry and Anne Williams Scholarship
 Women's Study Club San Juan Island Scholarship
 Susan Scripps Wood and Leighton Wood Scholarship
 Esther Woodford Taylor Scholarship
 WRAEF ProStart Scholarship
 Jennie M. Wright Memorial Scholarship
 Joseph & Anneliese Zauchner Scholarship
 Joseph T. Zygmanski Scholarship

Donor List

President's Circle (\$100,000+)

Anonymous (1)
Kenneth and Elizabeth Cave

Visionary Circle (\$50,000+)

Andeavor Foundation
Estate of George W. Wallace
The Norcliffe Foundation

Champion Circle (\$25,000+)

Anonymous (1)
Tom Austin Alberg
Discuren Foundation
Ferguson Foundation
Nancy and Kendall Gentry
Macy's
William and Kathleen Massey

Ambassador Circle (\$10,000+)

Biella Foundation
Claude E. Blackburn
Nancy Chapman
Christian Foster
Susan and Walter Guterbock
Beverly Havens-Tutt
Mac and Linda MacGregor
Rick Mullen
Rockefeller Philanthropy Advisors
Shell Puget Sound Refinery
Swinomish Tribal Community
Tanya Young

Founders Club (\$5,000+)

Anacortes Public Library Foundation
BECU
Brand Energy Solutions
Anne and David Clark
Herbert Drummond, Jr.
Daniel and Madolyn Goodfellow
Larry and Patricia Hilliard
Janson Foundation
Scott Larson and Carol Olson
Jim and Marlene Niehaus
North Harbor Diesel

Puget Sound Energy Foundation
Megan Scott O'Bryan and Matt O'Bryan
Skagit Publishing Argus Christmas Fund
SVC WIC Associated Students
Tucker Family Foundation

Leadership Club (\$1,000+)

Anonymous (4)
Pam and Tom Allen
Rae Allen
Anvil Corporation
Athlon Solutions
Solveig Atterberry Charities
Baird Foundation
Dr. Harbinder S. Bal
Cynthia Bangston
Banner Bank
Richard and Kathryn Bennett
Kate Biringer
Brinderson
Christine Broder
Drs. Gail and Tim Bruce
Dr. Laura Cailloux
Karen Calcaterra
Linda Carter
Catholic Community Services NW
Central Welding Supply
Shirlee Christensen
Lee Cohrs
Susan Cooper
Sandra CrankMulkey and Donald Mulkey
Michael and Dianne Crawford
D.A. Davidson
Scott deRecat
Dimensional Communications
Distribution International
Lorna and Gordon Dobberstein
Kathy and Dennis Doll
Drs. Roger and Leslie Estep
Nancy Fey
Janice Fischer
Furniture Today
Bruce Gatzke
Scott and Christina Hamm
Paul Harnden
HERC Rentals
Heritage Bank
Lisa and Mike Janicki
Peter and Susan Janicki

Laurina Jenkins
Seth Jeretzky
JH Kelly
Steven J. Jones
JVIC Industrial
Ed and Pam Kaczmarczyk
Dr. Thomas Keegan and Maria Peña
Steven King
Greg Kleven
Jane Koetje Gillisse and Dick Gillisse
Joanne Kurtz
Darrin and Sandy Leber
Mary and Randy Lee
Robert and Kathy Malphrus
Barbara MartinezGriego
Max Dales Steak & Chop House
MDU Resources Foundation
Mills Electric
Dennis and Maryann Mosher
Moss Adams
Steve and Lianna Neyens
North Coast Credit Union
Bruce Oldemeyer
P.E.O. Chapter GB
PANNTOA
Performance Contracting
Jeffery Pleet and Cynthia Casey
Rain For Rent
Dr. Ellen Rak and William Dunlap
Kelly and Kyle Reep
Reisner Distributor
James and Kori Roes
Yadira and Josue Rosales
David Ryberg and Joan Penney
Safway Services
George and Suzanne Santino
Schreiber Starling Whitehead Architects
Jim and Mary Scott
Gary and Judy Shand
Kassi Simonsen
Skagit Immigrant Rights Council
Skagit Valley Food Co-op
Skagit Valley Hospital
Skagit Valley Tennis Association
Soroptimist International of Oak Harbor
Tori Springer
Dr. Mark and Diane Studley
SUPERHEAT
Team Industrial Services
Barbara Thorne

Jason Tritt
Carolyn Tucker and Paula Christilaw
Brad and Jenny Tuininga
Paul and Penny Turvill
United Steelworkers Local 12591
Universal Plant Services
Ciarelle Valdez
Ronald and Nancy Van Dam
Bruce and Ann Van Tassel
VECA Electrical
Sonali Virendra
Whidbey Health Foundation
Dave White
Steve White
Don Wick
Charlene Wickstrom
Isaac and Sarah Williams
Kathleen M. Willins
Windermere Real Estate / Whidbey Island
Tony and Leslie Wisdom
Andrew Woodruff
Rob and Rachael Woods
William and Jennifer Woyski

President's Club (\$500+)

Anonymous (1)
700 Valve Supply
Dr. Mari AcobNash and Tom Nash
Dr. Suzy and Tony Ames
Steve Andersen
Jim and Joyce Anderson
Jean and Bret Andrich
Claudio and Celina Angulo
Kevin Bakker
Walt and Lyn Bankowski
Banner Bank
Birch Equipment
Julie Blazek and Jacque Beamer
Jeremy and Sarah Brown
Rod and Karen Carter
Deb Castle
James Cieccko and JoAnne Myers-Cieccko
Coldwell Banker Tara Properties Community Fund
Sharon Cole Waldschmidt and Leo Waldschmidt
Chris Dahl
Dakota Art Store
Dealer Xpress Window Tinting
Subedar and Manjinder Deol

Donor List

President's Club (cont'd)

James and Lessley Dutton
 Lindsay Fiker
 Chad Fisher Construction
 Colleen and Chad Fisher
 Food Services of America
 Lisa and David Forsythe
 Dave Garcia
 Margo Grothe
 Scott Halligan
 Lief Hazelet
 Dr. Cecilia Hernandez and Steve Brewer
 Mark Hillman
 Barbara Holmes
 Greg and Sue Jensen
 James K. Keresey
 Robert and Judy Kihm
 Gary and Diane Knutzen
 Lakeside Industries
 Drs. Kenneth Lawson and Tonya Drake
 Jason Lind
 Eric and Jennifer Longchamps
 Flora and Rafael Lucatero
 Greg and Tami Michael
 Joseph Mobley
 Dr. James Monroe
 MRC GLOBAL
 Kathy Nansel
 P.E.O. Chapter HO
 Peoples Bank
 Sinead and Colby Plagge
 Regency on Whidbey
 Caryn Regimbal
 Kathleen Root
 Jill and Marinus Rouw
 Tony and Julie Savoy
 Matthew Scammell
 Kristine Schmaltz and Mike Sible
 Jerry Sells and Linda Larson
 Judy Smith
 Linda Smith
 John Sternlicht and James Finley
 Charles and Theresa Stevens
 Jeffrey and Stacy Stewart
 SVC Associated Students
 Mount Vernon

Torey and Lisa Swanson
 Keith and Kathy Thomson
 Total Western
 Janet Wallace
 George Welch
 Anthony Young and
 Dr. Joseph Mulcahy

Foundation Club (\$300+)

Nancy and Eric Anderson
 Balance Point Physical Therapy
 Ron Bennett and Susan Fish
 Steve and Julie Bennett
 Boeing Company Gift Match Program
 Jessica Cawthon
 Ken and Pam Davis
 Dixon Golf
 Terri Donovan
 Susan Duffy
 Eaglemont Golf Course
 Terry and Chris Freeman
 Sheri Gutzmer
 Hampton Inn & Suites
 Duane Henson
 Peggy Imada
 Dr. Allen Ivey and
 Dr. Mary Bradford Ivey
 Dane and Brianna Jacobs
 Ed and Wanda Jaramillo
 Mary Kuebelbeck
 Law Office of Christon C. Skinner
 Lithtex NW
 Christopher and Victoria Long
 Janet Masters
 Brian Murphy
 Chris and Holly Oliver
 Mark and Lori Olson
 Philip and Theresa Ongna
 William Overby and Terry Davis
 Drs. David and Rachel Paul
 Paula Plumer
 Dwanna Roberts
 Vhari RustClark and Alan Clark
 Christa and Martin Schulz
 Robert Servoss
 Skagit Valley College Bookstore
 Dr. Roxanne Smith
 Duane and Arleen Stowe
 Pat and Kelsey Swapp
 Mel and Alice Takehara
 Justin and Jada Trammell
 Jenny and Brock Veltri

Ron and Jan Wesen
 Anne Will and James Winchester
 Michael Witmer
 Don Wong
 Drs. Joan and Wayne Youngquist
 Rob Zwick, MD

College Club (\$100+)

Anonymous (9)
 Astrid Aamot
 Jon and Susan Aarstad
 Arden and Bill Ainley
 Crystal Allison
 Alpine Dental
 Amazon Smile
 Catherine and Mino An
 Michael Antetomaso
 Apple Adventure Racing
 Bobbi Ashe
 Jonathan Avedovech
 Claudia Avendano and Jonathan Guitierrez
 Cruz Adrianna Aviles
 Michael Beemer and Lynette Brower
 Lynnette and Jake Bennett
 Michaela and Timothy Bertch
 Patrick Bevers
 Thomas and Lesha Boucher
 Rose and John Brierley
 Garrett and Kristyn Brown
 Dr. Carl and Carmen Bruner
 Dan and Cami Burfeind
 Burgermaster
 Neta and Jim Cahill
 Sabrina Carrillo
 Kiran Chaturvedi
 Craig Cherryholmes
 Gerry and Susan Christensen
 Dina Clowes
 Marjan Coester
 Joan Collins
 Virginia Darvill
 Gregg and Leah Davidson
 Kim Davis
 Duncan West and Mary Deaton
 Cathy Degnan and Greg Sawyer
 Jess and Barbara del Bosque
 Dave and Susan Deschenes
 Jim and Robin Donovan
 Kurt Dunbar
 Kristine Duncan
 Catherine Ebelke

Julie Edwards
 Ken and Diane Eelkema
 Evelyn Ellis
 Jean Elo
 Doug Engstrom and Randi Green
 Steve and Karen Epperson
 Farmhouse Restaurant
 Alison Fernandez
 Adam Foy
 Marilyn and Nathan Franklin
 Renae Furness
 Phillip German
 Patsy Good
 Pat Grenfell
 Arthur and Lydia Guel
 Jennifer Gustafson
 Neil and Bonnie Hall
 Hilda Halliday
 Deryl Hart
 Patti Hart
 Dr. Anthony Hatch
 Claver Hategekimana
 Richard Hawk
 Janice Hayes
 Pamela Heppner
 Heather and Peter Hernandez
 Lyn and John Highet
 Rose and Harley Hill
 Jordan Holstrom and Lori Hagins
 William and Joann Hoover
 Jeannie Huffman
 Cherie Iverson
 Mary Iverson
 John and Julianne Ivey
 Stacey and Jason Jacques
 Dori Johanson
 Dr. Diane and Mark Johnson
 Dr. Mark and Jeanne Johnson
 Linden Jordan
 Sandy Jordan
 Roger and Leslie Jungquist
 Helen Kane
 Jaswant Kaur
 Greg and Danica Kazan
 A. Lee and Kate Kirk
 Kiwanis Club of Mount Vernon
 Geoffrey Knutzen
 Greg and Kathy Knutzen
 Greta Kocol
 Jere and Wende LaFollette
 Tracy Lamb
 Debra and Doug Lancaster

Donor List

College Club (cont'd)

Glenda Landon
 Charles Luckmann
 Brian Martin
 Danielle and Darrek Martin
 Rob Martin
 Sally Maylor
 Daniel McCarty
 Mike and Belinda McDowell
 Patrick McNelly
 Microsoft Corporation
 Mark and Alison Miller
 Susan Miller
 Kelley and Karen Moldstad
 Greg Moran
 M.J. Moriarty
 Susan Nelson
 Sophia Nisha and Mohammed Shorab
 Terri Nogler
 Tamara Oakes
 Dr. Dave Olausen and Mrs. Sydney Olausen
 Daisy and Esteban Padilla
 Laura Paise and Douglas Edwards
 Jeannette and Bob Papadakis
 Tania Paul
 Claire Peinado
 Raymond Perrigoue
 Anne Perry
 Chad Pettay and Erik Casynn
 Chris Phillips
 Jennifer and Eric Pitner
 Matt and Beth Plush
 Bill and Jan Polinkus
 Tim and Kristy Post
 Maggie Potter
 Alana and Jason Quigley
 Lisa and Steve Radeleff
 Tim and Nancy Raschko
 Kyle and Kelly Reep
 Dan and Dona Rientjes
 Laura Riquelme
 Stella Rolph
 William Ruh II
 Angelica Sanchez
 Robert and Cynthia Sanderson
 Cynthia Scaringe

Schact Aslani Architects
 Michael Schweigert
 Shane Servoss
 Shawn Servoss
 Ernest and Deirdre Shipman
 Ranjit Singh
 Sisters of the Holy Names
 Skagit Valley Malting
 Skagit Northwest Orthopedics
 Dr. Brad Smith and Dale Fournier
 Dean Snider
 Jill Snow
 Brad and Karissa Sokol
 Kristi Spinnie
 Bill and Bobbie Stady
 Holly Stevens
 Carol Straight
 Jane Sullivan
 Harry and Toni Sutton
 Law Office of Shara Svendsen
 Swinomish Casino and Lodge
 Glenn and Karen Tamayoshi
 Ann Tanner
 Susan Thornton
 Hai Tran
 TRICO Companies
 Maureen Van Diest
 Larry and Carol Van Sickle
 Paul and Rene Vance
 Estevan Vivanco Meza
 Dan and Tammy Walker
 Martha Wallin
 James and Darcy Walters
 Walton Beverage
 Barbara David Weymouth
 Kelli White Mellish
 Katelynn Whitney Orellana
 Brenda Wilbur
 Karin Williams
 Carmen Wolff
 Woods Coffee
 WSI Accounting
 Kendra Yoshimoto
 Carl Young and Anne Hodgins
 Kwang Yu
 Ann Zukoski

Donors (up to \$100)

Anonymous (1)
 Janet Anderson
 Mike Armstrong
 Lisa Bennett

Gary Benson
 Surjit Bogga
 Annie Bratun
 Camaloch Golf Course
 Sheree Carpenter
 Betty Carteret
 Brenna Casey
 Alyssa Cherryholmes
 Jandraleen Curry and Eric Harman
 George and Nancy Dooley
 Emily Elam
 The Enchanted Florist
 Nancy and Larry Erickson
 Gina Falcetti
 Farmstrong Brewing Company
 Fireweed Terrace
 Victoria Fischer
 Sean Fitzgerald
 Susan Fitzgerald
 Amanda Flores
 Jesus Fuentes
 Daniel Graber
 Richard Greaves and Becky Brennan Greaves
 Lorna Greene
 Darren Greeno and Leah Hornaday
 Martha Griswold and William Ivey Haggan
 Janet Hersey
 Richard Hodgins
 Brent Hoelzie
 James and Britt Hoffman
 Sabrina Houck
 Stephanie Hunter
 Stella Ireland
 Thomas Kahn
 Jeff Kaptein
 Kenneth Kelley
 Roland King
 Vivian Koetje
 Priscilla La Cour
 Shelley Lacey
 Kathy and Mark Larson
 Dennis Lautenbach
 Kristi Leksens
 Debra and Bruce Lissner
 Eve Maconachie
 Jorge Manzanera/Skagit Mediation
 Randy and Melissa Martin
 Phyllis McCleave
 Linda McCollister
 Sandra Mersereau

Mod Pizza
 John and Kari Moore
 Arthur and Elinor Nakis
 Kiernan Park Egan
 Tom Pasma and Sue Sultz
 Barbara Paul Mayer
 Jessie Payne
 Veronica Perez
 Trevor Podratz
 Sean Powell and Angela Fraser Powell
 Robert Pringle
 ProQuest
 Denise Reijm
 Harold and Georgette Robertson
 Thad and Elizabeth Robey
 Cerridwen Rodriguez
 Scott and Angie Rutherford
 Art Sabo
 Tim and Shayla Schofield
 Debolika Sen
 Debbie Shaffer
 Marianne Shapiro
 Smart Food Services
 Dr. David and Lillian Smith
 Kalan Smith
 Darby Soderquist
 Barbara Spaeth
 Joe and Jess Spencer
 Benjamin St. Germain
 Sylvia Stevens
 Dale and Marilyn Stutesman
 Scott Sutton
 Jenny Tan
 Joyce Tighe
 Kristina Toyce
 Annie Tucker
 The late Dr. Ernest Tutt
 US Bank Foundation
 Brenda Valencia
 Kent and Anna Van Egdom
 Mary Sue Walker
 Susanne P. Walker
 Jessi Weaver
 Darren and Charissa Westergard
 Jamar Williams
 Ryan Wilson
 Matthew Yeoman
 Mike Yeoman
 Kathleen Young
 Matthew and Illianna Youngsman

Currents

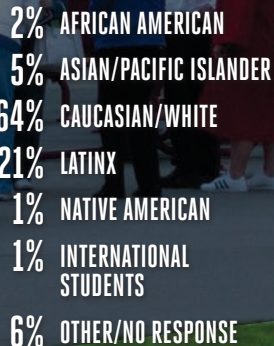
2405 East College Way
Mount Vernon, WA 98273

www.skagit.edu
www.skagitfoundation.org
www.skagit.edu/currents

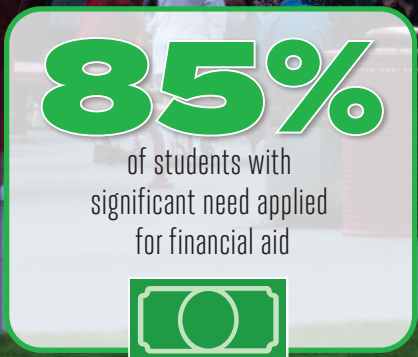
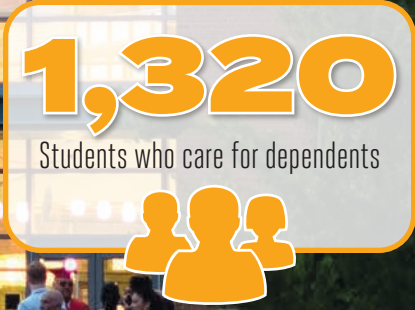
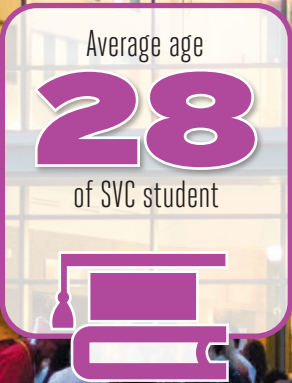
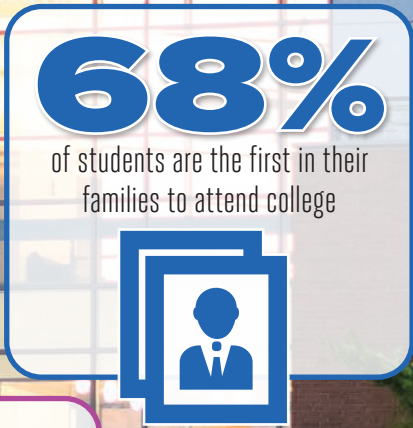
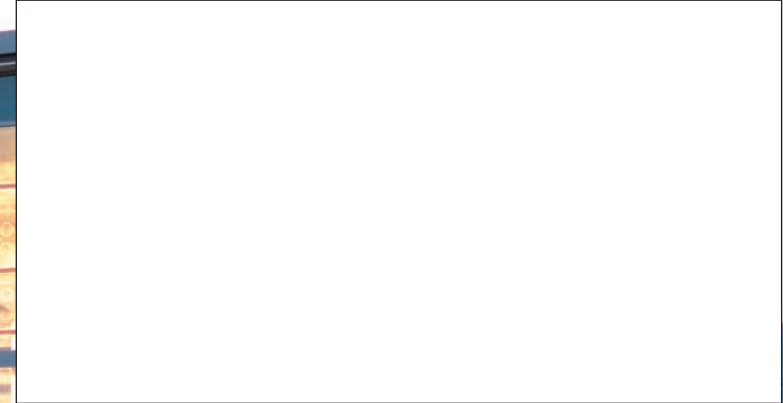
Student Profile



Enrollment By Intent



May not add up to 100% because students might be counted in more than one ethnicity.



SVC ADVANCEMENT TEAM

Anne Clark
Vice President of College Advancement

SVC FOUNDATION

Brad Tuininga
Executive Director

Pam Davis
Director of Development

Kelly Reep
Community Relations & Special Events Manager

Karin Williams
Fiscal Analyst

CAMPUS VIEW VILLAGE

Griffin Uchida
Director of Residence Life

Shannon O'Neil
Administrative Services Manager

MARKETING & COMMUNICATIONS

James Walters
Director of Marketing & Communications

Arden Ainley
Chief Public Information Officer

Marcus Badgley
Web Content Specialist

Don Cairns
Graphic Designer

Peter Goodrich
Multimedia Designer

SVC provides a drug-free environment and does not discriminate on the basis of race, color, religion, national origin, sex, gender identity, sexual orientation, disability, marital status, or age in its programs and employment.